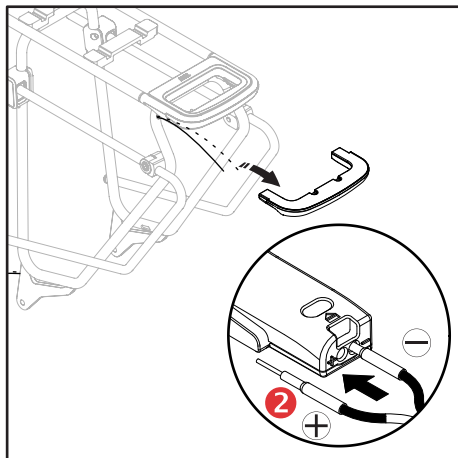
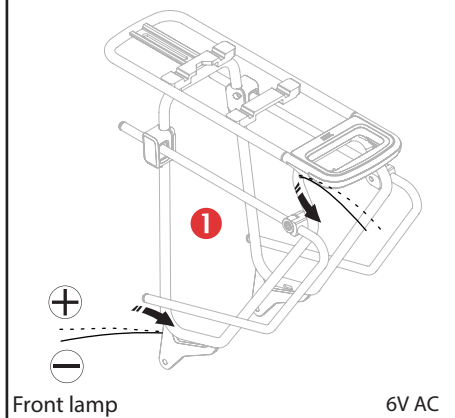




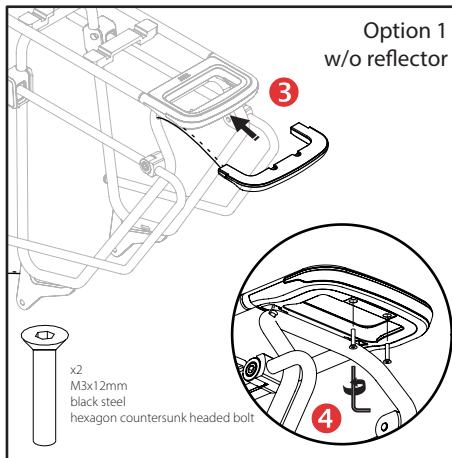
GLOW SAFE-STOP DYNAMO

Instruction manual

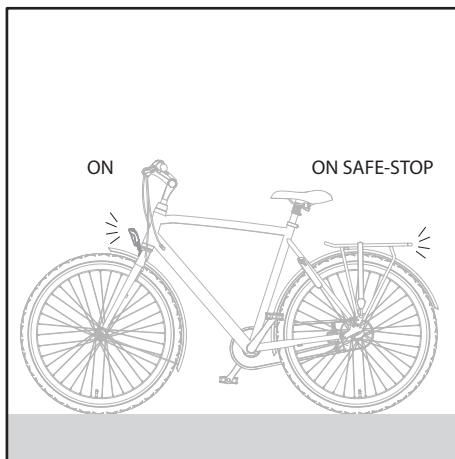
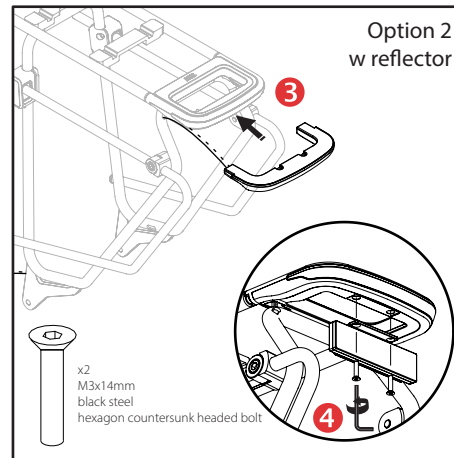
Commuter Carrier



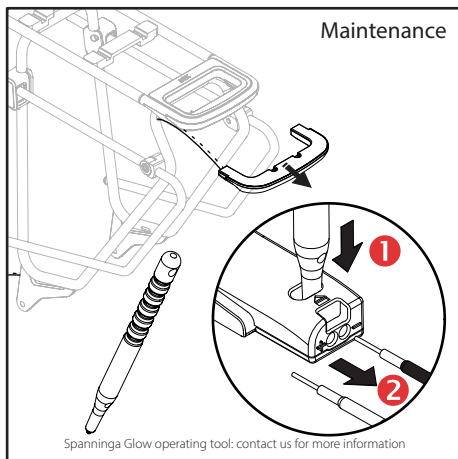
Option 1 w/o reflector



Option 2 w reflector



Maintenance



Wire recommendations

- 24AWG or 22AWG
- standard length: 1.2m or 1.5m / other TBD
- (a) standard finish pre-stripped & tinned on 11,5(±0,5)mm
- (b) standard finish pre-stripped & tinned on 5(±0,5)mm
- (c) shrink sleeve on 15(±0,5)mm
- (d) wire coverage by shrink sleeve Ø 2mm on 5(±0,5)mm
- (e) exposed wire Ø 0,7(±0,1)mm on 6.5(±0,5)mm

